



## PEDESTRIAN PLANNING



Ryan Snyder has been a pioneer and advanced the field of pedestrian planning. He is a Federal Highway Administration pedestrian design instructor. He is also certified as a National Safe Routes to School Instructor and a California Walkability Expert. RSA prepares a variety of pedestrian master plans, safe routes to school plans, and ADA transition plans that can be applied to any part of a community.

### Riverside Pedestrian Master Plan

Client: City of Riverside

RSA facilitated a 30-member committee appointed by the Mayor of Riverside to examine issues of community walkability. Prepared a Pedestrian Master Plan that contains walkability planning principles, policies, design guidelines, recommendations for land use planning and zoning modifications, as well as recommendations for capital improvements.

## PLANNING PLACES FOR PEOPLE



### Burbank Pedestrian Master Plan

Client: City of Burbank

RSA prepared a Pedestrian Master Plan for the City of Burbank. The plan includes contains walkability planning principles, policies, design guidelines, ADA requirements, recommendations for land use planning and zoning modifications. The plan also includes a list of recommendations for capital improvements at over 200 locations to improve pedestrian accessibility.



transportation planning for livable communities

## PEDESTRIAN PLANNING

### Calabasas Pedestrian Policies and Guidelines

Client: City of Calabasas

RSA prepared a pedestrian policy and design guidelines plan for the City of Calabasas. The plan contains walkability planning principles, policies, design guidelines, recommendations for land use planning and zoning modifications

### Walk Audits

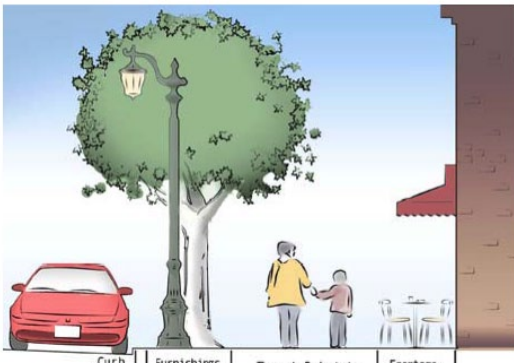
Client: California Department of Health Services

Ryan Snyder has been selected as one of seven experts certified to conduct walk audits for California communities. The audits include a brief study of the community's pedestrian friendliness, and a half-day presentation and discussion with community leaders to teach what makes neighborhoods pedestrian friendly, as well develop preliminary recommendations for pedestrian improvements in each community. Snyder has delivered walk audits in Los Angeles, Santa Monica, Riverside and Coachella.

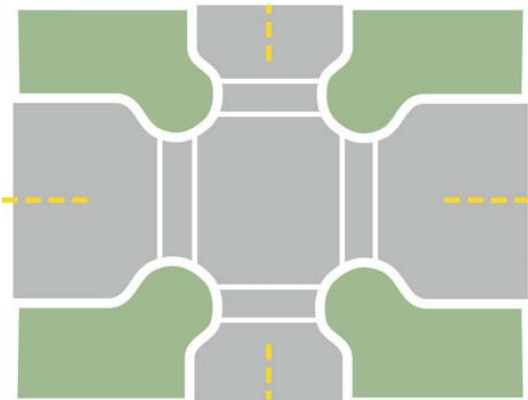
### Santa Barbara Pedestrian Master Plan

Client: City of Santa Barbara

Co-managing preparation of a Pedestrian Master Plan for the City of Santa Barbara as an associate of Alta Planning + Design. The plan contains Goals and Policies, recommended capital improvements, a Safe Routes to School element, a paseo plan, design guidelines and recommendations for zoning changes that will result in more pedestrian-friendly planning. Implementation of this plan will move an already pedestrian-friendly city to one of the very top pedestrian cities in the United States.



## THOUGHTFUL DESIGN





transportation planning for livable communities

## PEDESTRIAN PLANNING

### West Hollywood Pedestrian Master Plan

Client: City of West Hollywood

Managed preparation of a Bicycle and Pedestrian Master Plan for the City of West Hollywood as an associate of Alta Planning + Design. The pedestrian element contains a crash analysis, specific capital project recommendations such as curb extensions, advanced stop bars, improved signals and many more. It also provides recommended zoning changes that will help make new development more pedestrian friendly.

### Livable Waikiki Visioning Project

Client: City of Honolulu

Worked on a team with Wilson, Okamoto & Associates and Alta Planning + Design to prepare a vision for transforming Waikiki from an overly touristy destination to a more pedestrian, bicycle and transit friendly place. The consultant team conducted in-depth visioning charrettes with various local stakeholders to shape the vision. The pedestrian elements in the vision include more pedestrian friendly intersections, traffic calming and a trail to encircle Waikiki.

### Orange County Non-Motorized Plan: Pedestrian Element

Client: Southern California Association of Governments

RSA prepared the pedestrian element of a Non-Motorized Plan for Orange County. The work described the features of pedestrian-friendly environments, identified the most pedestrian-friendly districts in Orange County, and drew guidelines for making communities more conducive to walkers, as well as guidelines for future development.



## ENVISIONING BETTER NEIGHBORHOODS





## PEDESTRIAN PLANNING

### PLANNING MORE LIVABLE PLACES

#### Coachella Valley Bicycle, Pedestrian and Trail Plan

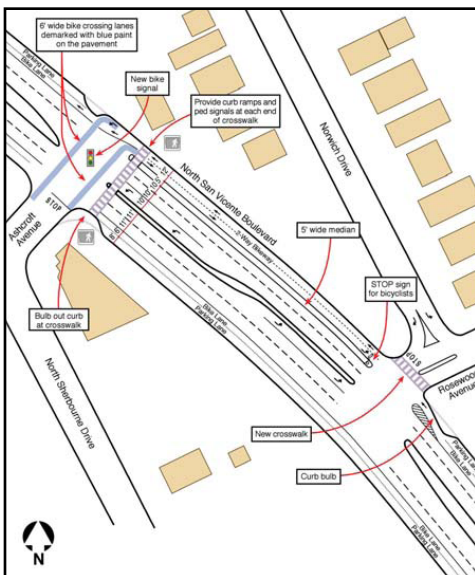
Client: Coachella Valley Association of Governments

Managed preparation of a Non-Motorized Plan for the Coachella Valley as an associate of Alta Planning + Design. The pedestrian plan identified the key pedestrian issues in the Coachella Valley, planning and design guidelines for improving the pedestrian environment, as well as guidelines for cities to use in new developments. Last, the plan included a network of multi-purpose trails that link with trails in the San Rosa Mountains, Joshua Tree National Park and points on the eastern and western ends of the Valley.

#### City of Vista Pedestrian Master Plan

Client: City of Vista

Managed preparation of a Bicycle and Pedestrian Master Plan for the City of Vista as an associate of Alta Planning + Design. The pedestrian component included an analysis of existing conditions, use of a sidewalk and curb ramp inventory, and recommendations for creating a pedestrian-friendly environment through capital improvements and new design guidelines for new development.





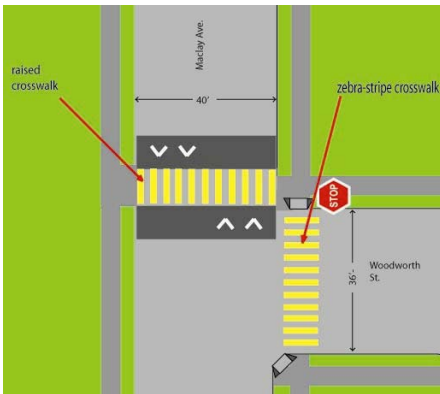
transportation planning for livable communities

## PEDESTRIAN PLANNING

### San Fernando Safe Routes to School Plan and Grant Application

Client: City of San Fernando

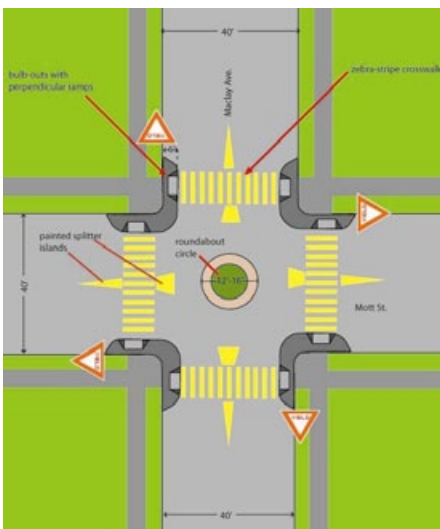
Prepared a safe routes to school plan for the City of San Fernando and a grant application to fund the listed improvements. The planned enhancements included a variety of cutting edge techniques to make it safer for children to walk to school, such as a road diet, restriping, a mini-roundabout, raised crosswalks, bulb-outs, high-visibility crosswalks, countdown signals, and more.



### Pedestrian Planning Seminar

Clients: Many public agencies

Ryan Snyder developed a one-day seminar entitled "The Basics of Pedestrian Planning." The seminar covers topics including walkable land use planning, street networks, sidewalk design guidelines, ADA issues, designing safe intersection crossings and more. It includes a walkabout to apply the concepts to the local context. Snyder has presented to course to staff of approximately 30 jurisdictions.



### Other Safe Routes to School Plans

RSA has prepared plans and has secured over \$10 million in Safe Routes to School grants for cities. The following represent a sample.

- Glendale
- Palm Springs
- Desert Hot Springs
- Coachella
- Delano
- County of Riverside
- County of San Bernardino